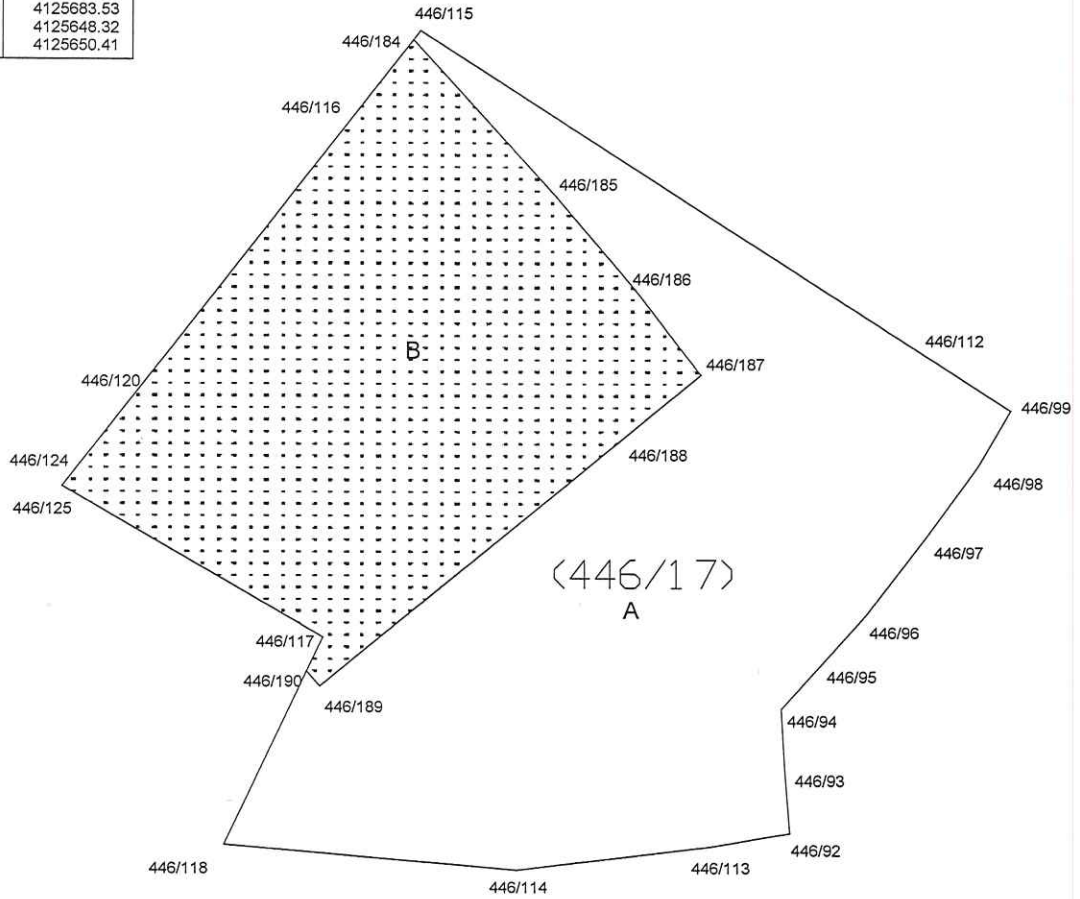


İLİ	MUĞLA
İLÇESİ	MILAS
MAH/KÖY	KIYIKIŞLACIK
ADA/PARSEL NO	446/17

Ayırma Çapı

YÜZÖLÇÜMÜ (TAPU)	Ha	M ²	Dm ²
UYGULAMAYA GİRMEYEN (A)	-	8875	14
UYGULAMAYA GİREN (B)	-	5064	13
		3811	01

NoktaNo	Y	X
446/92	547966.80	4125627.91
446/93	547966.15	4125636.29
446/94	547965.59	4125645.20
446/95	547971.76	4125652.10
446/96	547977.18	4125658.28
446/97	547985.46	4125669.29
446/98	547992.72	4125679.43
446/99	547997.23	4125687.15
446/112	547983.99	4125695.77
446/113	547955.71	4125625.99
446/114	547929.09	4125622.73
446/115	547915.60	4125740.13
446/116	547906.34	4125728.16
446/117	547902.10	4125655.13
446/118	547888.49	4125626.29
446/120	547875.57	4125688.45
446/124	547867.47	4125678.00
446/125	547866.24	4125676.42
446/184	547914.63	4125738.88
446/185	547934.56	4125716.82
446/186	547945.47	4125703.95
446/187	547954.53	4125692.04
446/188	547944.31	4125683.53
446/189	547901.70	4125648.32
446/190	547899.87	4125650.41



Özgür
Özgür SÖZBİR
 Harita Mühendisi

	UYGUNDUR	
DÜZENLEYEN	KONTROL EDEN	ONAYLAYAN
Adı Soyadı	Masan KARSLI	Özgür KÖZ
Tarih	Harita Mühendisi	
İmza	Oda Sic.No: 4255	Arsa ve Arazi Düzenlemesi
		Şube Müdürü