



This project is co-funded by the European Union and the Republic of Turkey

Technical Assistance for Assessment of Türkiye's Potential on Transition to Circular Economy EuropeAid/140562/IH/SER/TR

The Role of Local Governments in the Transition to a Circular Economy

Simon Clement, Senior Coordinator Sustainable Economy and Procurement,
ICLEI - Local Governments for Sustainability

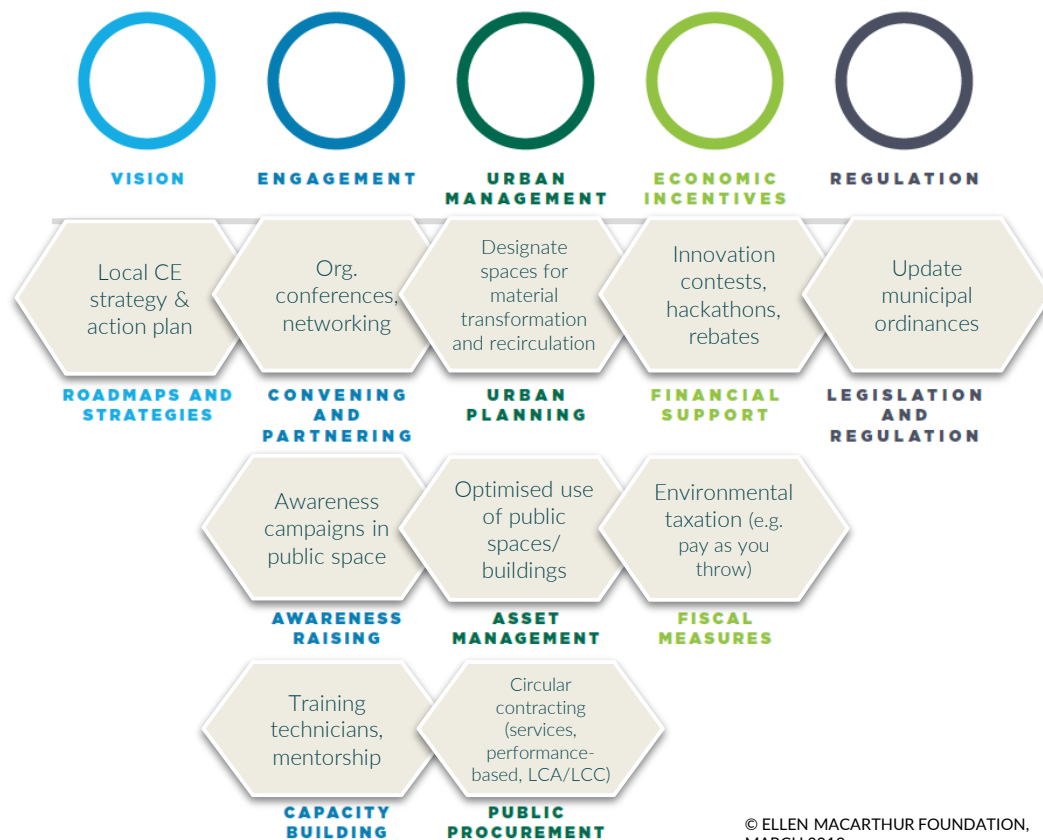
Activity 1.2.2 - Circular Economy Workshops
6th of October, Ankara, Türkiye

WHY WORK WITH CITIES?

Cities....

- House 75% of the EU population
 - Consume 75% of natural resources
 - Produce 50% of global waste
 - Produce 60-80% global GHG emissions
- Huge concentration of material flows and actors
 - Cities are cradles of innovation
 - Cities offer a scale for demonstration and experimentation
 - Local governments hold key legislative and management functions

CITY LEVERS



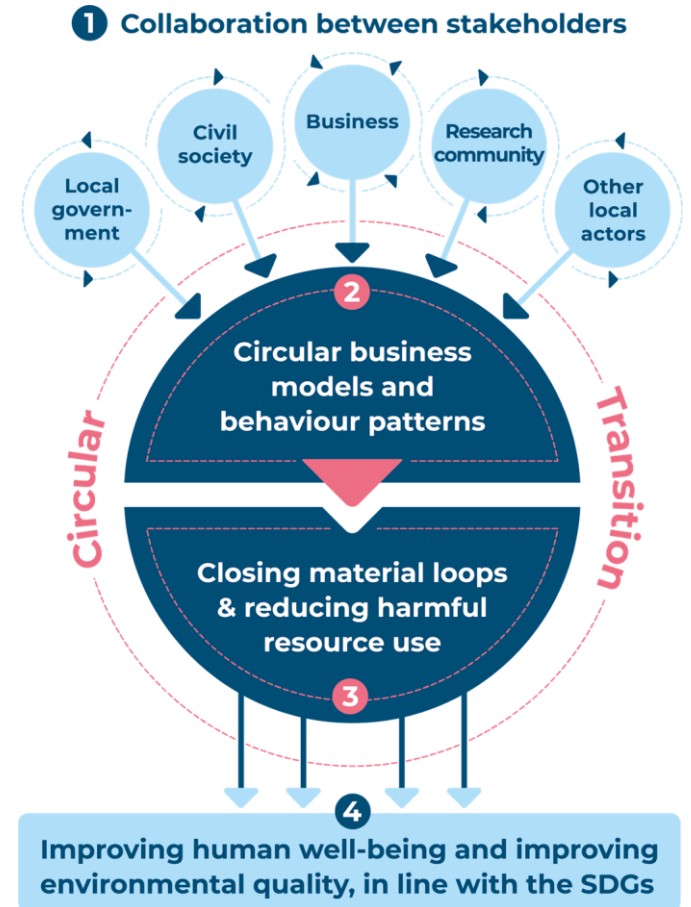
https://www.ellenmacarthurfoundation.org/assets/downloads/CE-in-Cities_Policy-Levers_Mar19.pdf

THE CIRCULAR CITY

A circular city is one that ...

- *promotes the transition from a linear to a circular economy in an integrated way across all its functions in collaboration with citizens, businesses and the research community...*
- *This means in practice fostering business models and behavioural patterns...*
- *which decouple resource use from economic activity by maintaining the value and utility of products, components, materials and nutrients for as long as possible, in order to close material loops and minimise harmful resource use and waste generation...*
- *Through this circular transition, we seek to improve human wellbeing, reduce emissions, protect and enhance biodiversity, and promote social justice, in line with the Sustainable Development Goals.*

Source: European Circular Cities Declaration



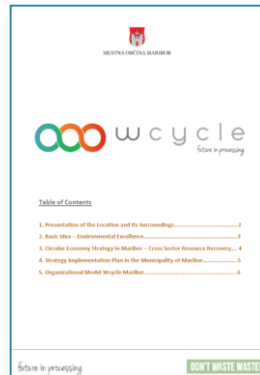
CHALLENGES IN IMPLEMENTATION

- Understanding city metabolism
 - Regulatory/policy framework designed for the linear economy
 - Requires involvement of many stakeholders (internal and external)
 - Physical and mental inertia
 - Behavioural change needed
- Political engagement
 - Stakeholder participation
 - Pilot actions
 - Metabolic studies
 - Networking!

In practice



A GROWING MOVEMENT...



EXAMPLES: CITIZEN ENGAGEMENT & ENTREPRENEURSHIP

Ex: Turku, FI

1. '1.5 degree lifestyles'

- Awareness campaign on sustainable consumption paths, adapted to various resident demographics

[1.5 degree life](#) | [Turku.fi](#)

Ex: Leuven, BE

2. Cultivating a culture of share and repair

- 'Repair cafés' are workshops with shared tools and mentors to teach repair of household appliances, furniture, clothes, and more.
- Leuven works with digital tools and networking with other cities around incentivising repair

[ShaRepair](#)



Ex: Eskilstuna, SE

3. ReTuna Mall

- Shopping centre exclusively featuring secondary or shared products & services
- Events programme to build a network of mutual support and interest in the circular business sector

www.retuna.se

Ex: Valladolid, ES

4. Incubator contest for circular innovation

- Mentorship and financing for winning concepts, network of involved actors
- 1.4MEUR invested in 90+ winning projects 2018-2020
- Resource-wise refurbishment of an industrial warehouse to use as a 'Circular Innovation Hub'

EXAMPLES: BUILDING & CONSTRUCTION



Ex: Helsinki, FI

1. Circular coordination of excavated land masses

- City landmass co-ordinator appointed
- Material auditing, tracking, and handling requirements for all public and private constructions
- Minimum requirement for 5% recycled/reused materials



Ex: Capital Region / Roskilde, DK

2. Adaptive reuse, design for disassembly & circular procurement

- Checklists and guidance in preparation for all actors in the demolition process
- Material handling and monitoring requirements
- Materials prediction and management plan at the district and municipality level



Ex: Vienna, AT

3. Use of digital tools & secondary content

- Minimum requirement of % recycled / reused materials
- Requirement to calculate impact of renovation vs. new construction
- Life cycle analysis
- Digital passports of materials

EXAMPLES: FOOD & BIO-WASTE

Ex: Pontevedra, ES

1. Community composting & education

- In-situ treatment of bio-waste by households into high-quality compost
- Decentralised citizen participation
- Environmental education components

[Compostaxe comunitaria](#)

Ex: Porto, PO

2. Reducing food waste

- Development and use of demand prognosis tools in HoReCa, separate waste collection route optimisation and smart containers
- Action in coordination with social economy & tourism sector actors to build circular capacity of local businesses

Ex: Apeldoorn, NL

3. Revalorisation of green waste into new products

- Separate collection of leaves, grass and trimmings from public parks and green spaces
- Revalorisation treatments including bokashi, biochar, paper products, and 3D printing

Ex: Maribor, SL

4. Rehabilitating urban soil and producing km0 food

- Bio-waste treatment as fertilizer to improve quality of urban soil
- Urban Gardening with components of social integration, education and local food production

URBAN SOIL 4 FOOD



European Circular Cities Declaration



The **European Circular City Declaration (CCD)** is a commitment document which local and regional governments across Europe can sign to help **accelerate the transition from a linear to a circular economy** in Europe.

DEVELOPED BY:



AIMS:

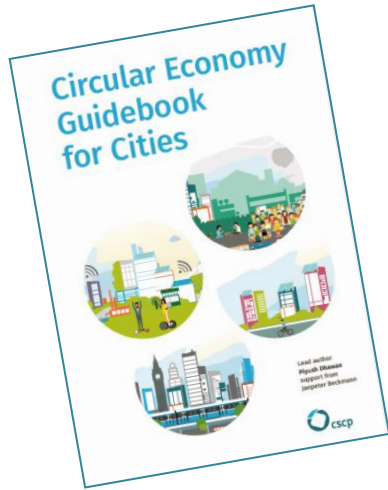
- Allow local and regional governments across Europe to **communicate their commitment** to supporting the circular transition
- Provide a **shared vision** of what a “circular city” is
- Underline the **critical role which local and regional governments need to play** in making this transition happen
- Establish a **community of committed organisations** to share their experiences, challenges and successes

www.circularcitiesdeclaration.eu

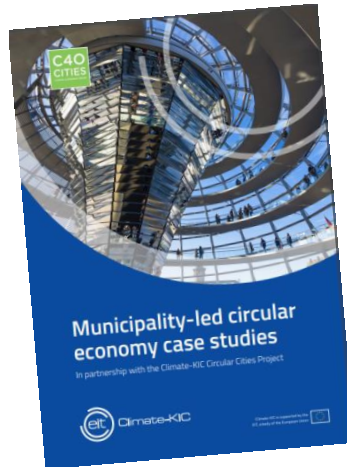
Guidance



CE GUIDANCE FOR CITIES



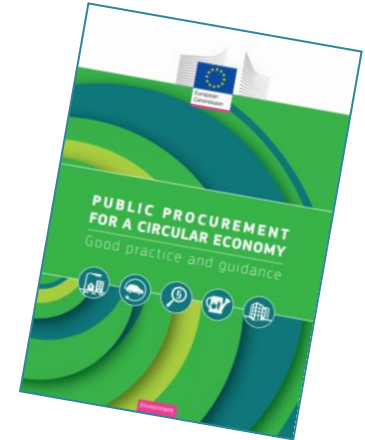
https://www.scp-centre.org/wp-content/uploads/2019/03/Circular_Cities_Publication.pdf



<https://www.c40.org/researches/municipality-led-circular-economy>



https://www.eib.org/attachments/thematic/circular_economy_15_steps_for_cities_en.pdf



https://ec.europa.eu/environment/gpp/pdf/CP_European_Commission_Brochure_webversion_small.pdf

USEFUL LINKS

- European Circular Economy Stakeholder Platform
<https://circulareconomy.europa.eu/platform>
- EIB Circular City Financing Guide
www.circularcityfundingguide.eu
- Ellen MacArthur Foundation Circular Economy in Cities Programme
www.ellenmacarthurfoundation.org/our-work/activities/circular-economy-in-cities
- OECD Circular Economy in Cities and Regions
www.oecd.org/regional/regional-policy/circular-economy-cities.htm

CONTACTS

ICLEI EUROPE

The ICLEI European Secretariat is based in Freiburg (Germany) with offices in Brussels (Belgium) and Berlin (Germany).

Name Simon Clement

Position Senior Co-ordinator -
Circular Economy

Email simon.clement@iclei.org



iclei-europe.org



ICLEI_Europe



@ICLEI_Europe



@ICLEI_Europe



This project is co-funded by the European
Union and the Republic of Turkey

Thanks for your attention.



Türkiye Döngüsel Ekonomi

IPACevre



@turkiyedonguseleekonomi

@ipa.cevre



@trdonguseleko

@ipacevre



Türkiye Döngüsel Ekonomi

IPA Çevre/Environment TÜRKİYE



Türkiye Döngüsel Ekonomi

IPA Çevre

dongusel.csb.gov.tr