



This project is co-funded by the European Union and the Republic of Turkey

# Technical Assistance for Assessment of Türkiye's Potential on Transition to Circular Economy

EuropeAid/140562/IH/SER/TR

Circular Economy Related Applications from EU

**Karl R. Hagspiel**, Senior Circular Economy Expert, Alpla Group, Austria

Circular Economy Workshops  
4rd September, Ankara, Türkiye

# ALPLA (Alpenplastik)



**1955**

Foundation



**22,100**

Employees



**177**

Production facilities  
(including 64 in-house)



**45**

Countries



**€ 4.00**

Billion euros –  
total sales 2021

## We specialise

in

- Packaging systems
- Bottles
- Closures
- Injection-moulded parts

## Our market segments

- Beverages
- Food
- Milk & Dairy
- Beauty Care
- Home Care
- Oil & Lubricants
- Pharmaceuticals
- Crop-protection

## Circular Economy at ALPLA

ALPLA aims at becoming the most sustainable packaging producer and is strongly engaged in realizing the 4R's:

- **Reduce**
- **Reuse**
- **Recycle**
- **Replace**

... fossil-based Plastics

- Inhouse
- Lightweighting
- Life Cycle Assessment
- Simple One

- Paper Based
- Bio Based

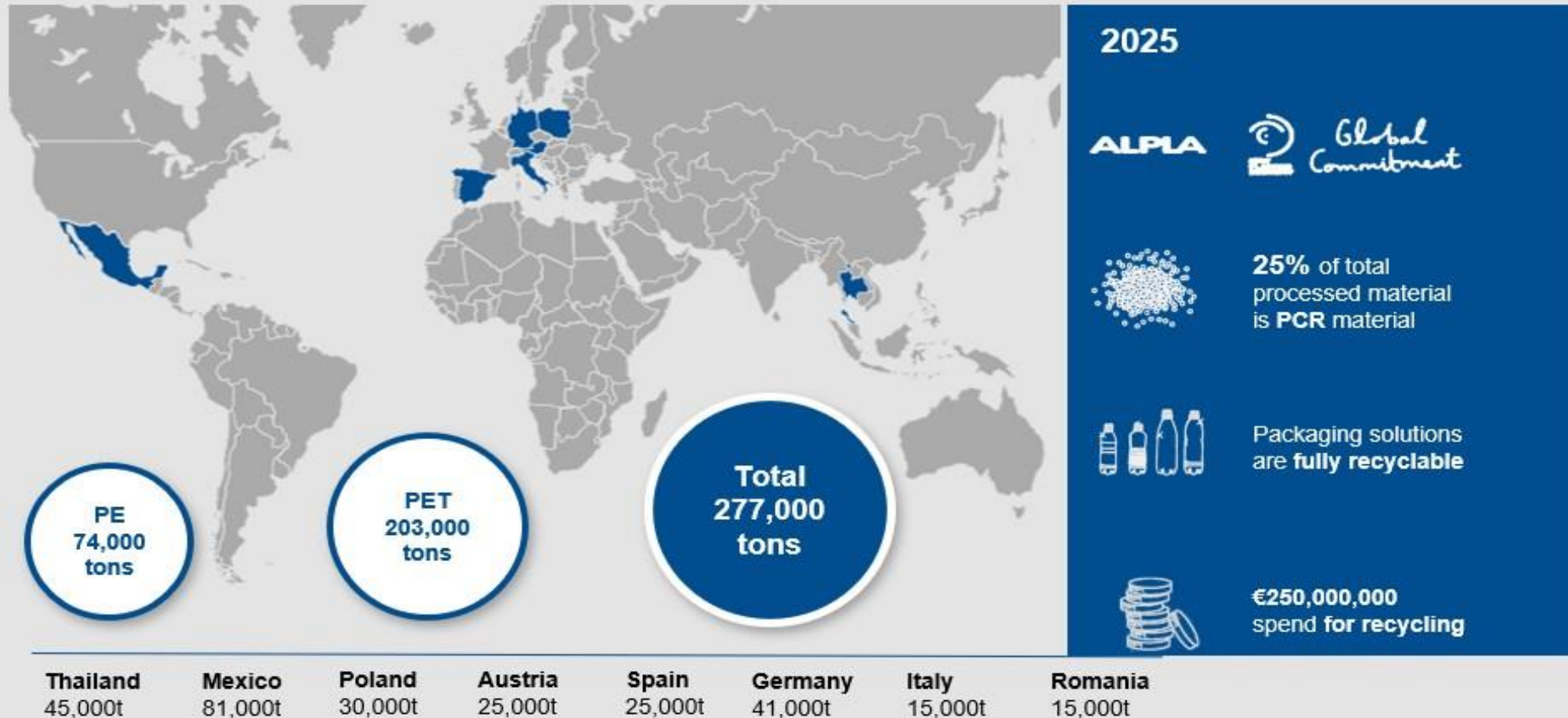
- Re-usable PET Bottles
- Vöslauer Bottle

- ALPLA Recycling
- Closed Loop
- Design for Recycling



# Recycling worldwide

ALPLA's **recycling plants** have a capacity of 277,000 tons (2022).  
We confirm the ambitious targets in the New Plastics Economy Global Commitment.



# Recycling HDPE

Our rHDPE input and output is colorful!



Bales



Color sorted bottles



Washed and sorted flakes



Washed and sorted flakes



# Recycling PET

Clear/ foodgrade	BL80	CL80PC	CL80M	GR80
Color/ appearance	blue	grey	transparent	green
IV	0.80 (+0.05/- 0.00)	0.85 (+/- 0.03)	0.80 (+0.05/- 0.00)	0.80 (+0.05/- 0.00)

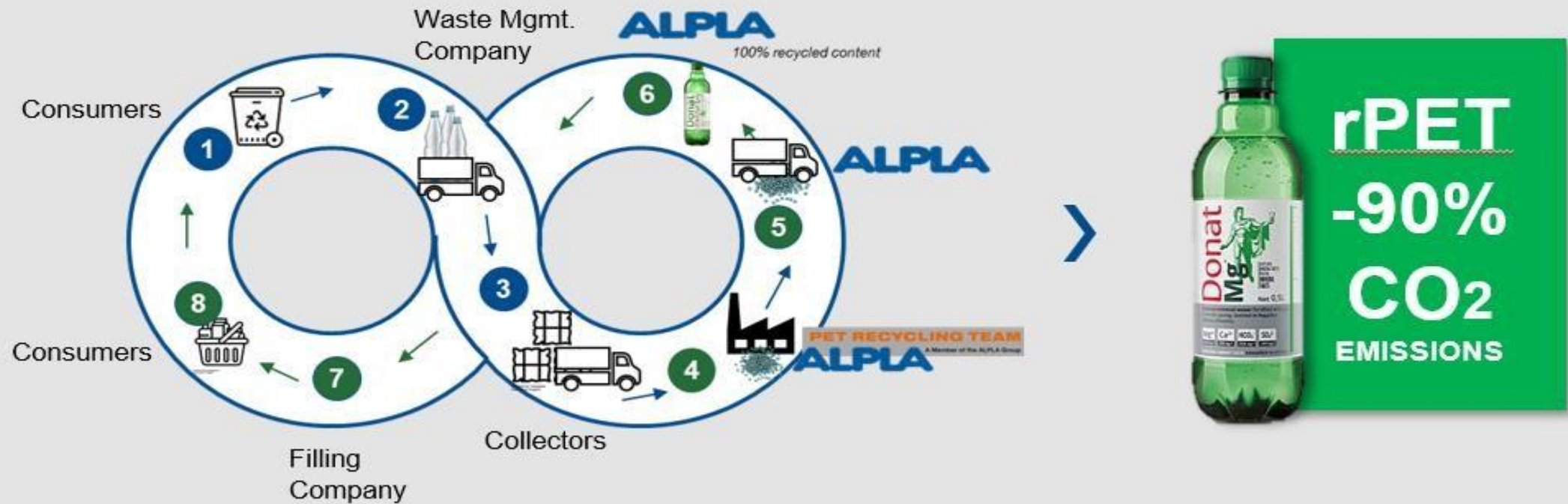


Additional material acc. to webpage PRT [petrecyclingteam.at](http://petrecyclingteam.at)



# Closed loop

ALPLA's **closed loop system** in Slovenia is industry best-practice, enabled by own recycling plants



ALPLA's competitive advantage results from **own recycling plants** where, **rPET granulate is produced**. Thereby, ALPLA can reduce CO<sub>2</sub> emissions and is less depended on external recyclers.



This project is co-funded by the European Union and the Republic of Turkey

# Thanks for your attention.



Türkiye Döngüsel Ekonomi

IPACevre



@turkiyedonguseleekonomi

@ipa.cevre



@trdonguseleko

@ipacevre



Türkiye Döngüsel Ekonomi

IPA Çevre/Environment TÜRKİYE



Türkiye Döngüsel Ekonomi

IPA Çevre

[dongusel.csb.gov.tr](http://dongusel.csb.gov.tr)