



This project is co-financed by the European Union and the Republic of Turkey  
Bu proje Avrupa Birliđi ve Türkiye Cumhuriyeti tarafından finanse edilmektedir

# TA Project: “Improving Emissions Control”

## Priorities for Inventory Development

Dr Chris Dore

Emissions Inventory Key Expert

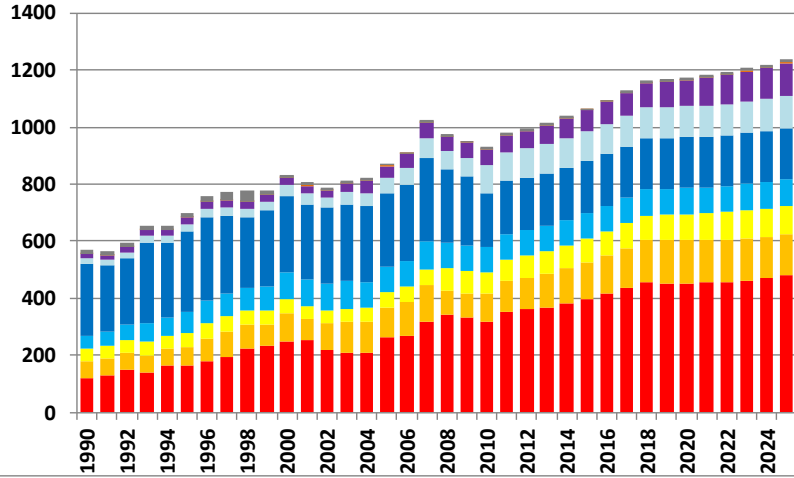




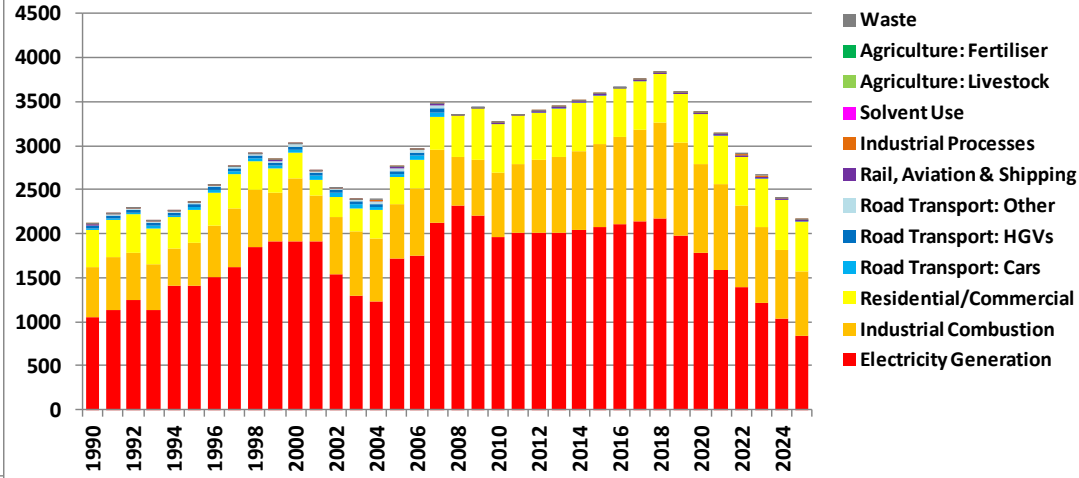
This project is co-financed by the European Union and the Republic of Turkey  
Bu proje Avrupa Birliği ve Türkiye Cumhuriyeti tarafından finanse edilmektedir

# Current Situation

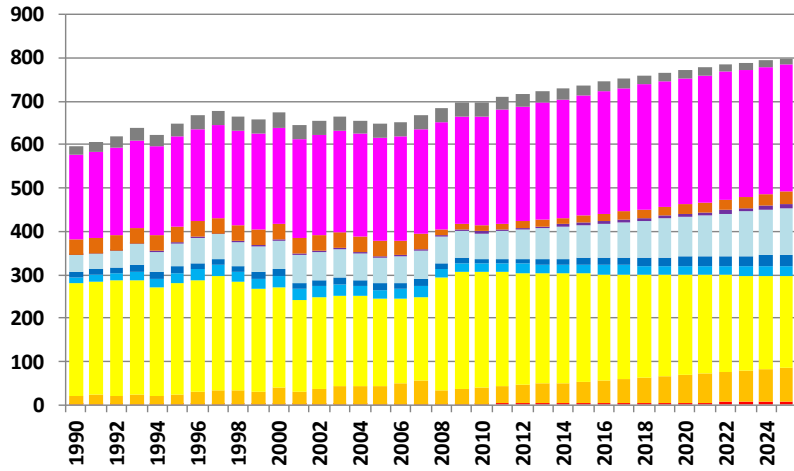
### NO<sub>x</sub> WaM (ktonnes)



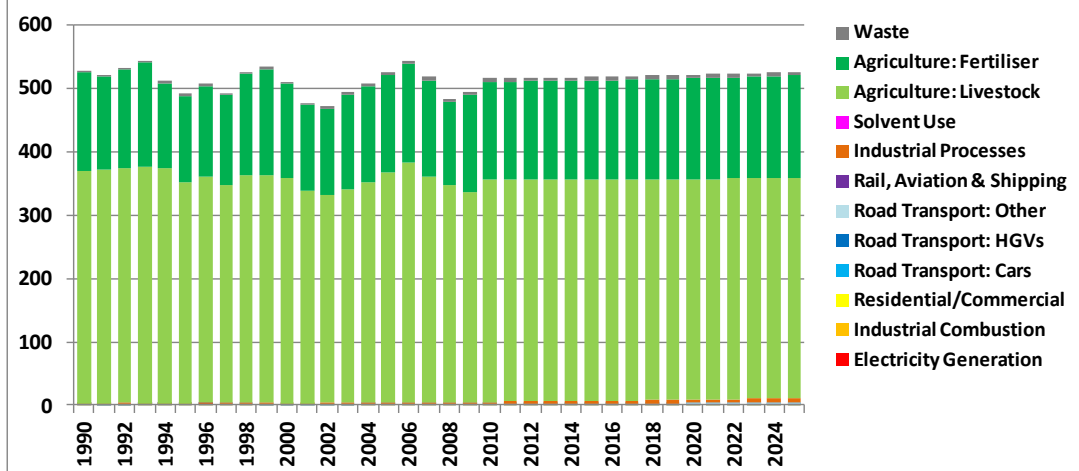
### SO<sub>2</sub> WaM (ktonnes)



### NMVO<sub>C</sub> WaM (ktonnes)



### NH<sub>3</sub> WaM (ktonnes)



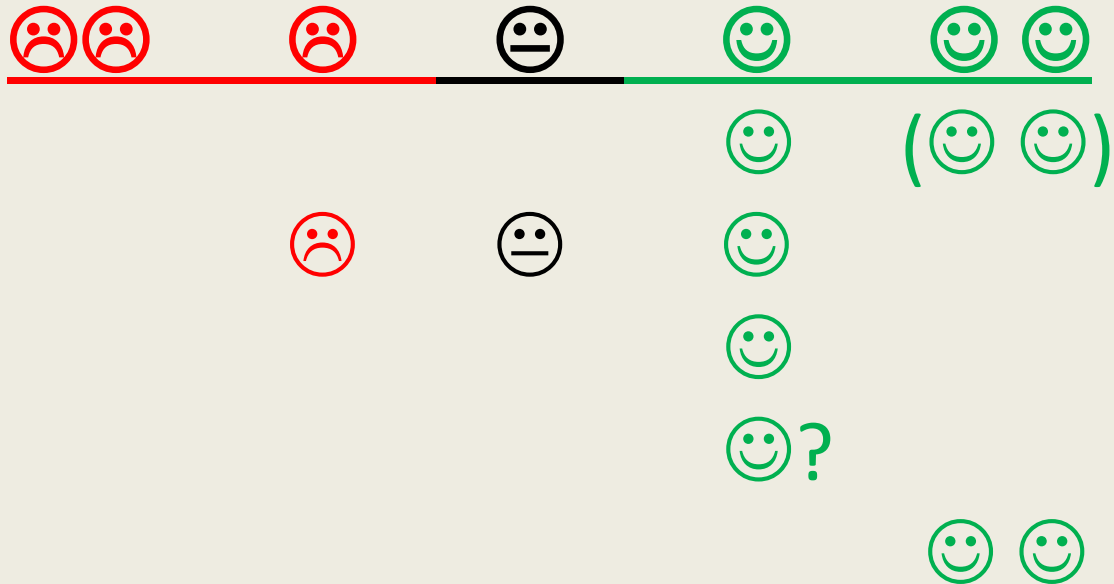


This project is co-financed by the European Union and the Republic of Turkey  
Bu proje Avrupa Birliği ve Türkiye Cumhuriyeti tarafından finanse edilmektedir

# Quality Assessment

- The first draft of the NECD emission estimates is a good start:

**Transparency**  
**Accuracy**  
**Completeness**  
**Consistency**  
**Comparability**





This project is co-financed by the European Union and the Republic of Turkey  
Bu proje Avrupa Birliği ve Türkiye Cumhuriyeti tarafından finanse edilmektedir

# Continuous Improvement Programme

- Continuous drive to improve emission inventories:
  - Requires more detailed data
  - Use of more country specific information
- It is important that data providers are very closely involved in this process
  - There are currently challenges associated with sharing datasets
- Joint working with the Greenhouse Gas Emissions Inventory is essential
- The Co-Board is an effective way of co-ordinating these activities.





This project is co-financed by the European Union and the Republic of Turkey  
Bu proje Avrupa Birliği ve Türkiye Cumhuriyeti tarafından finanse edilmektedir

# Electricity Generation & Large Industrial Sources

- These sources make large contributions to emission totals for NO<sub>x</sub> and SO<sub>2</sub>
- Currently there are some large uncertainties:
  - Sulphur content of fuels
  - The extent of the control/abatement of S emissions
- It will be much better to use point source data
  - Emissions from electricity generation exist
  - Estimates for other large point sources requires some processing.





This project is co-financed by the European Union and the Republic of Turkey  
Bu proje Avrupa Birliği ve Türkiye Cumhuriyeti tarafından finanse edilmektedir

# Road Transport

- Current estimates use a sophisticated method... but the quality of the input data needs improving
- Characterisation of the vehicle fleet:
  - Diesel/petrol proportions (each year)
  - Vehicle age distributions (each year)
- Need to improve the estimates of annual vehicle kms:
  - by vehicle type (each year).





This project is co-financed by the European Union and the Republic of Turkey  
Bu proje Avrupa Birliği ve Türkiye Cumhuriyeti tarafından finanse edilmektedir

# Agriculture

- A very detailed calculation methodology has been put in place.
- Livestock numbers:
  - Good data across the time series
  - Need some expert input to allow more detail
- Animal manure management
  - Detailed calculations
  - Current assumptions need checking by national experts.





This project is co-financed by the European Union and the Republic of Turkey  
Bu proje Avrupa Birliği ve Türkiye Cumhuriyeti tarafından finanse edilmektedir

# Summary

- A good start!
- However it is important to drive forward improvements
  - Some key datasets and expert input needed
  - But this is only possible through effective co-ordination
  - Needs to be driven by the Co-Board
- “Continuous development” doesn’t stop!
  - It requires contribution from all stakeholders.





This project is co-financed by the European Union and the Republic of Turkey  
Bu proje Avrupa Birliđi ve Türkiye Cumhuriyeti tarafından finanse edilmektedir

# Thank You for Your Attention

